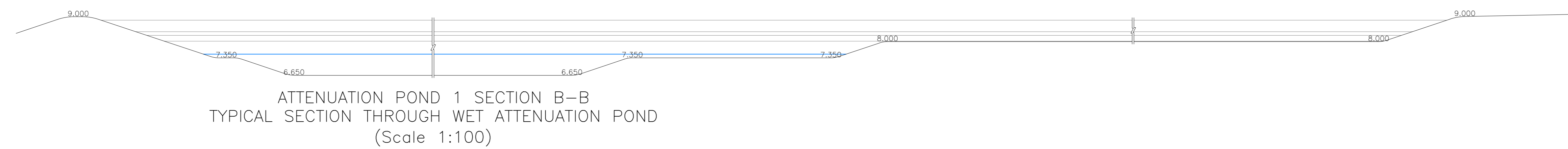
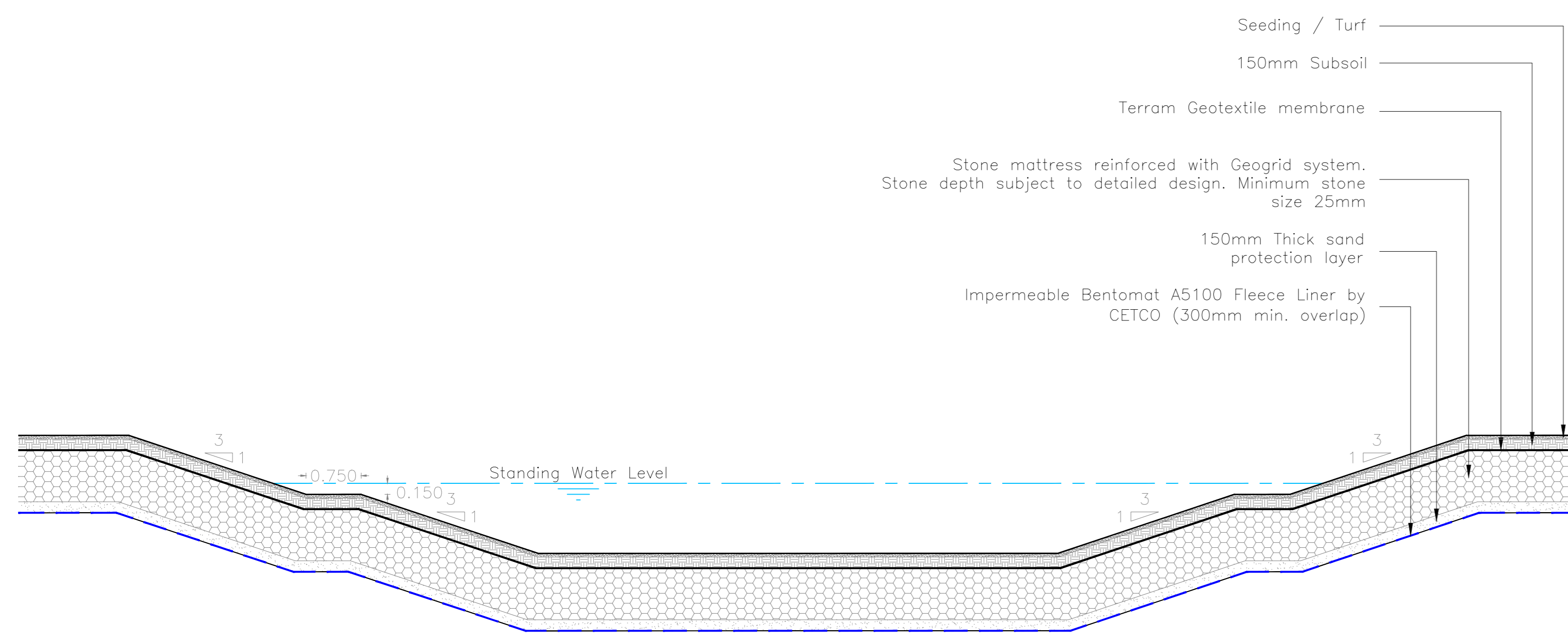


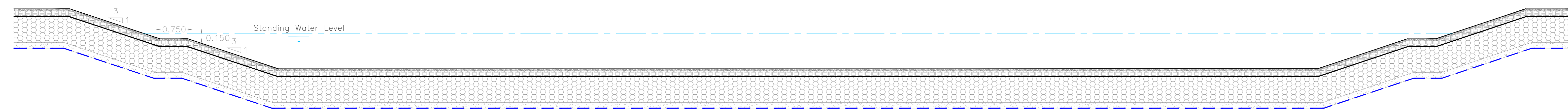
ATTENUATION POND 1 SECTION A-A
TYPICAL SECTION THROUGH WET ATTENUATION POND
(Scale 1:50)



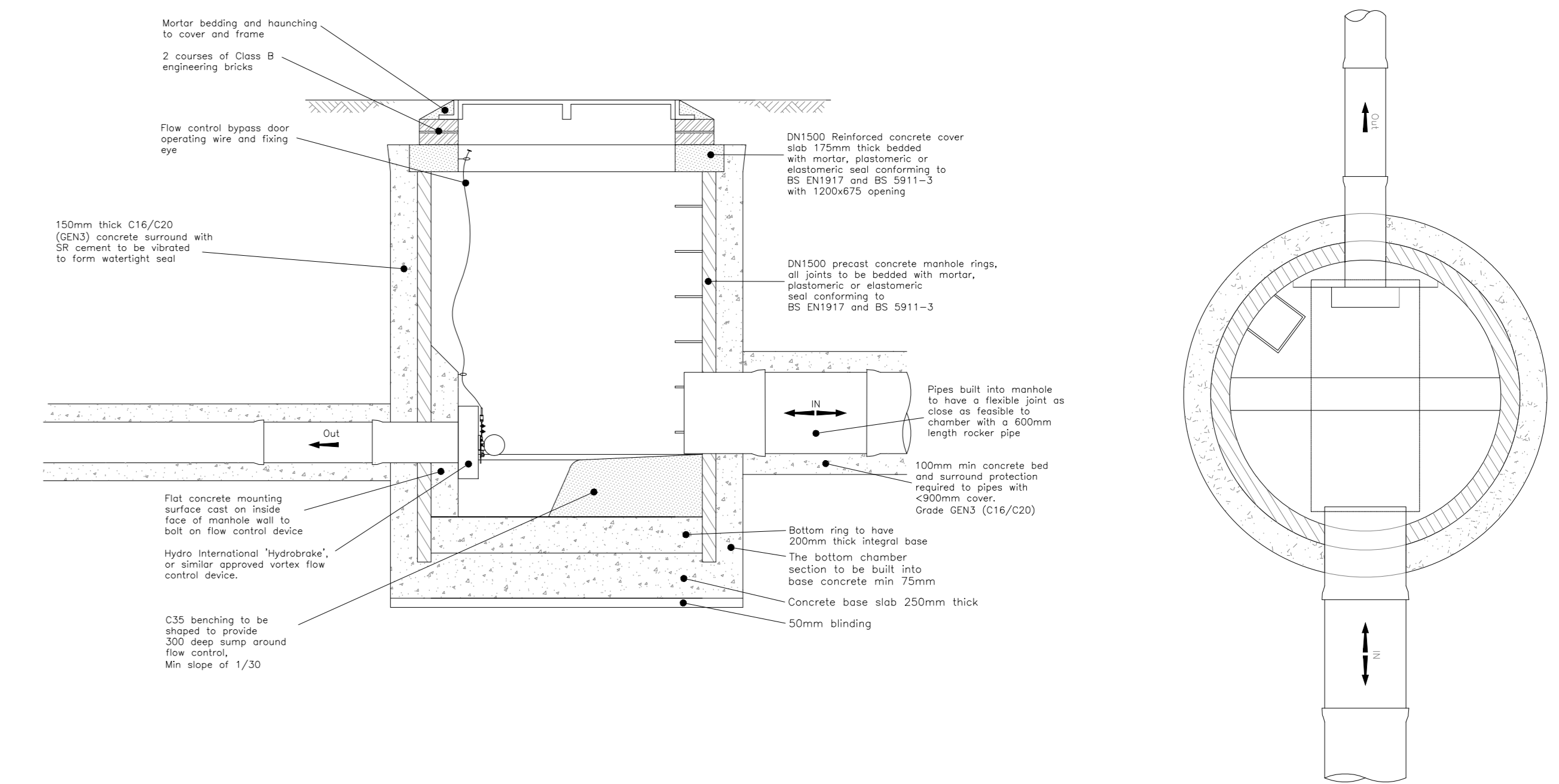
ATTENUATION POND 1 SECTION B-B
TYPICAL SECTION THROUGH WET ATTENUATION POND
(Scale 1:100)



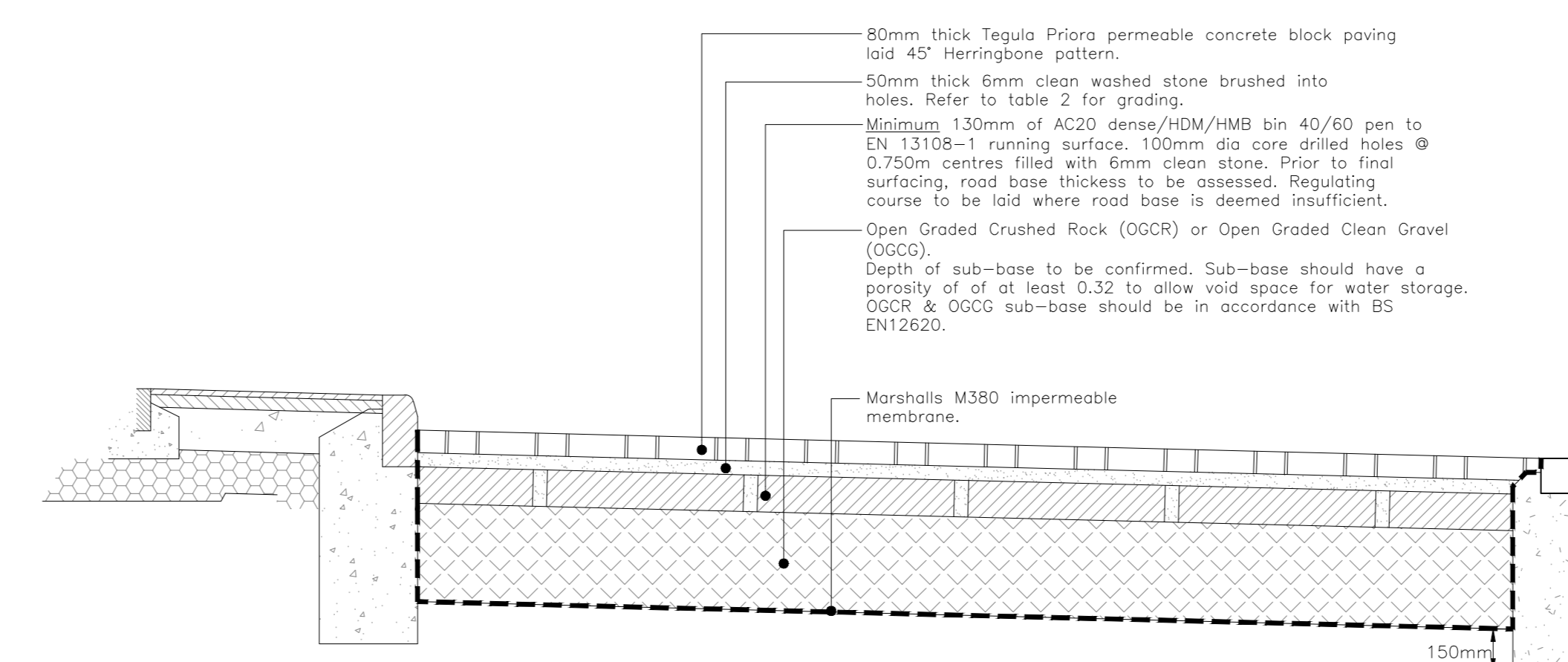
ATTENUATION POND 2 SECTION D-D
TYPICAL SECTION THROUGH WET ATTENUATION POND
(Scale 1:50)



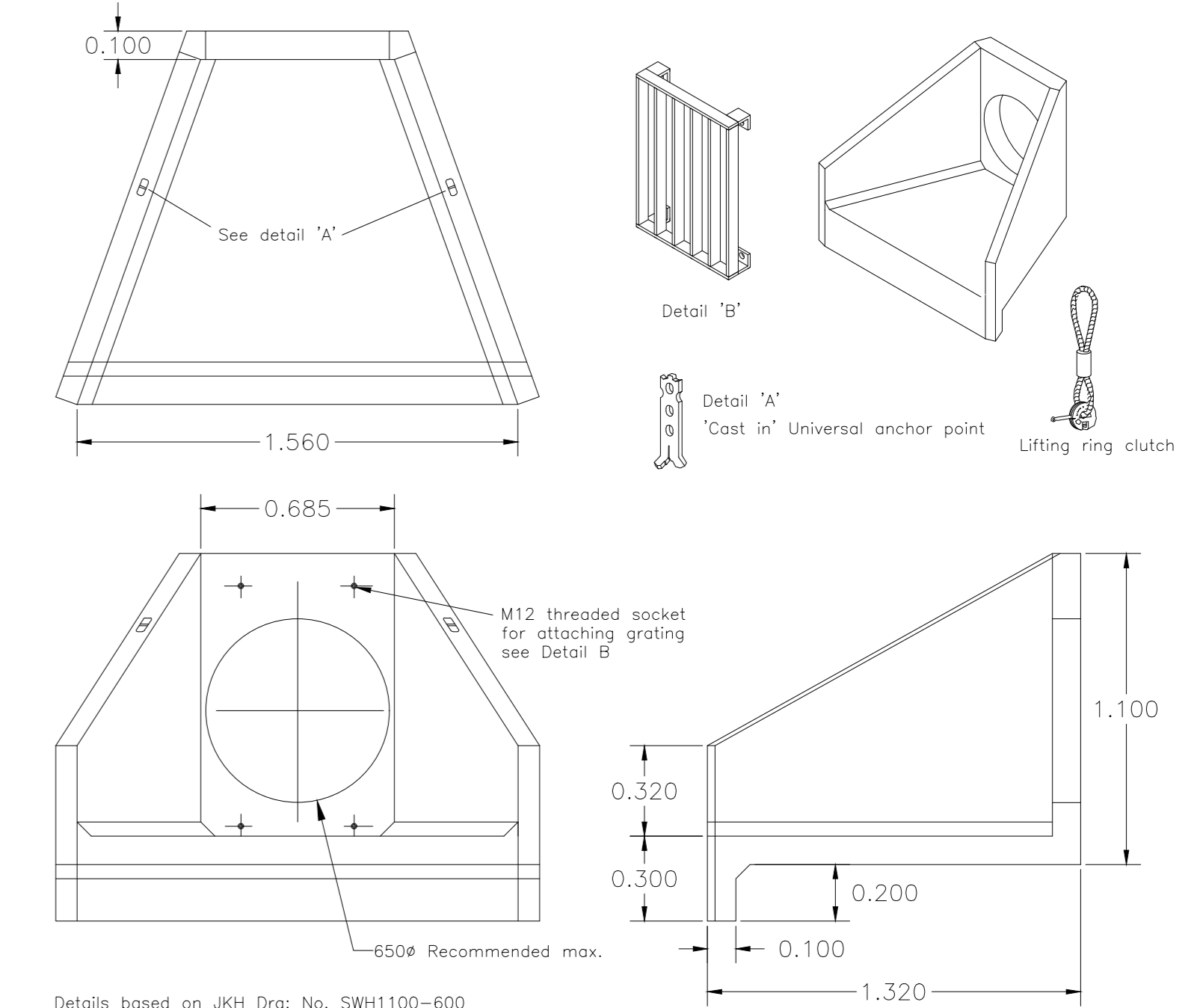
ATTENUATION POND 2 SECTION C-C
TYPICAL SECTION THROUGH WET ATTENUATION POND
(Scale 1:100)



TYPICAL FLOW CONTROL CHAMBER
DETAIL
(Scale 1:25)

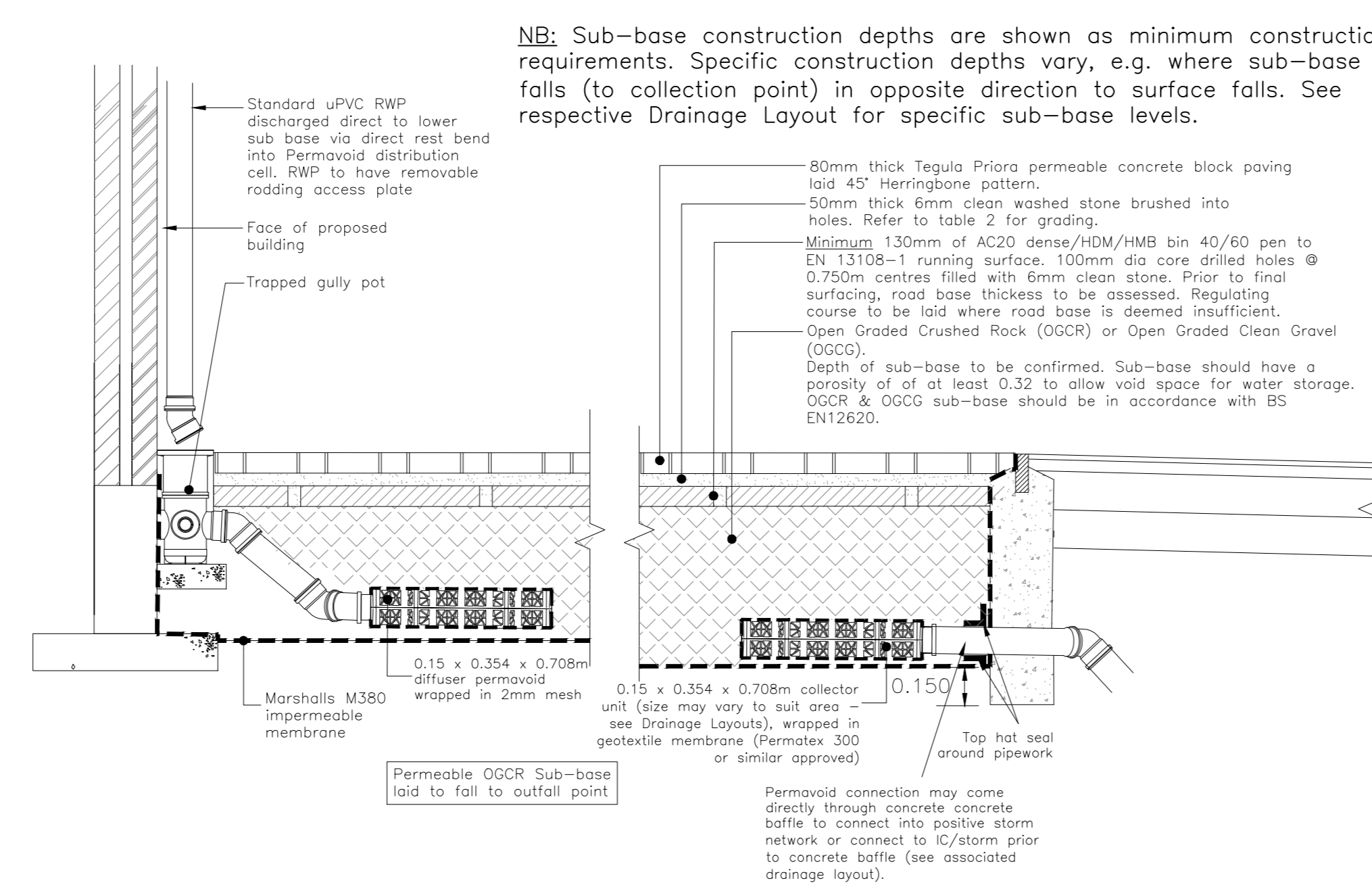


TYPICAL PERMEABLE BLOCK PAVED ROAD DETAIL
(Scale 1:20)

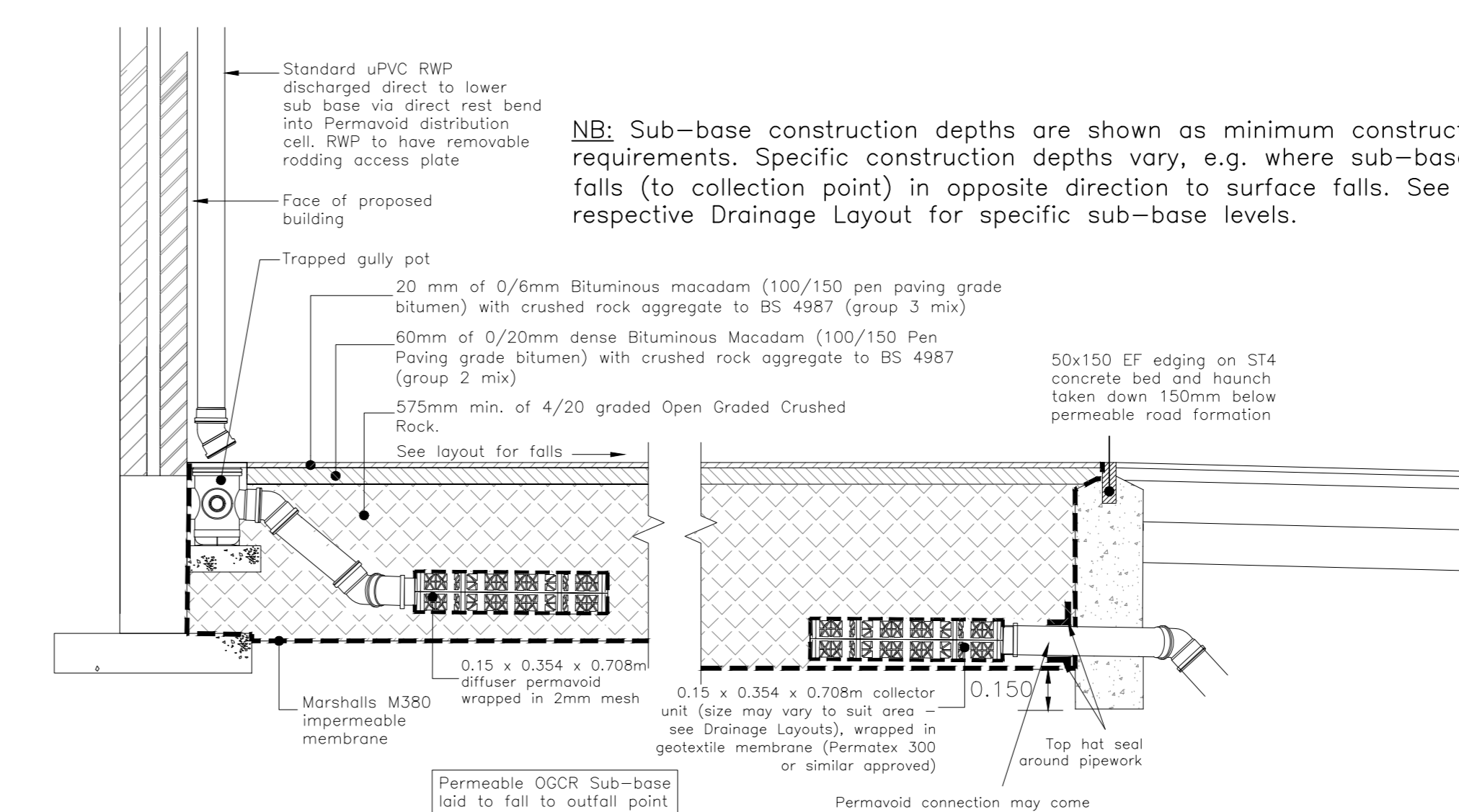


TYPICAL CONCRETE HEADWALL DETAIL
(Scale 1:20)

- NOTES:
- Do not scale from this drawing.
 - All dimensions in metres and all levels relate to Ordnance Datum.
 - This drawing is to be read in conjunction with all other engineering drawings. Any discrepancies shall be reported to MJA Consulting Engineers.
 - The level and location of all existing services shall be verified on site by the Contractor before commencing any construction work.



TYPICAL PRIVATE BLOCK PAVING CONSTRUCTION
WITH PERMEABLE SUB-BASE
(Scale 1:20)



TYPICAL PRIVATE DRIVE-BITUMINOUS CONSTRUCTION
WITH PERMEABLE SUB-BASE
(Scale 1:20)

Refer to Engineering Layout drawings for general arrangement.

REV. No.	DATE	DESCRIPTION	INITIALS
D	14.05.20	Attenuation pond 1 sections amended to suit latest layout.	JW
C	01.05.20	Attenuation pond 1 sections amended to suit latest layout.	JW
B	27.03.19	Attenuation pond 1 sections amended.	JW
A	20.03.19	Permeable block paving detail amended.	JW

PRELIMINARY

Client	PERSIMMON	MJA CONSULTING	CIVIL & STRUCTURAL ENGINEERS
Project	Land at Oakcroft Lane, Stubbington	Ipsum Court, 24 The Quadrant, Abingdon Science Park, Oxon, OX14 3YS	
Title	Sustainable Drainage Details and Sections	Scale AS Shown @ A0	Date Mar'19
		Checked AMc	Drawn JW
			Drawing No. 5909:25
			Rev D